

## NEW NURSE at GFMC



We welcome **Patsy Strickland** who started in January as our new *nurse practitioner*.

Patsy will provide support to our existing team, and is a welcome addition to the nursing staff.

Patsy will be managing the drop-

in clinic and will triage patients; if necessary Patsy can arrange an appointment with the GP.

Sarah our practice nurse can also issue prescriptions for some minor ailments if required.

Tara, our health

care assistant is available most days for blood appointments and general health care needs.

### **ABC CHECKS!**

Don't forget to book an appointment for your **ANNUAL BIRTHDAY REVIEW!**



**COFFEE MORNING**  
**Monday, 18th March**  
**from 9.30am**  
**Everyone Welcome!**

### *News Flash!*

GFMC is now a  
**'SMOKE FREE SITE'**  
Including the car parking area.



## 'OPEN DAY MAY OR JUNE'



**All are  
Welcome**

This year GFMC will be the 5th anniversary of GFMC and we will be planning to celebrate this with an *Open Day in May or June*.

All patients and local residents are welcome and more *details will be available soon*.

## WHAT IS: THE PATIENT PARTICIPATION GROUP?

We have a small patient group but are always looking for members to join and welcome feedback from patients .

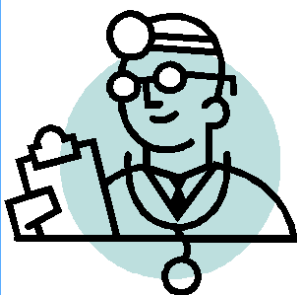


The group meet 2-3 times a year to discuss patient needs and the services we provide. Patients would meet with the assistant practice manager, staff members, and one of our GPs would attend the meetings whenever possible. We are constantly looking at different ways to improve the patient experience and this forum gives the group the opportunity to have their say and offer improvements and suggestions.

Your commitment is purely on a voluntary basis and you can give as little or as much time as you wish! Why not join us for a cup of tea/coffee and a chat! If you are interested, please leave your contact details with reception.



***Next Meeting—Friday, 8th April at 2pm***



*You may have been or will soon be informed by the surgery who **your named GP** is at the practice. We would like to reassure patients that this will not affect how you book an appointment and it is your choice which GP you see. We have to inform patients of their named GP as this is a requirement by NHS England.*

# WELL BABY CLINIC

Wednesdays, 9.30am–11am



This is a drop-in clinic provided by the Health Visitors and offers support and advice for mothers and fathers.

The clinic is for babies and toddlers under five years. You can also get baby immunisations and health checks.

Have your baby weighed regularly and talk to the health visitors about any worries or concerns that you may have.



## Physio First

Have you been suffering from muscular skeletal pain? e.g. back pain, knee or shoulder pain, etc and think an assessment by the physio at our **Physio First** clinic would help?

Did you know you can book this appointment directly with reception? Talk to reception today!

***'Self-Refer'***



We wish to thank all patients who took part in the patient survey and took time to give us feedback on our performance. We are pleased to report that we received a lot of positive feedback and appreciate your comments, positive or negative.

For a more detailed view of the survey results, please visit our website at: [www.gfmc.org.uk/surveyresults](http://www.gfmc.org.uk/surveyresults)

# Become a 'Virtual Patient Group Member'

## Time Constraints but want to have Your Say?

We are looking to develop a "Virtual Group" to enable patients to give their views and have their say, even if they cannot attend meetings but would like to be involved.

This 'virtual group' would be contacted via email, post or telephone and asked to give their opinions or views on issues which have been discussed at the PPG meetings.



Any contribution from the 'virtual group' would be kept confidential and completely anonymous.

If you would like to join the 'virtual group', please contact Emma Bostock, Assistant Practice Manager, on 0115 8965 002 or email: [ncccg.contact-gfmc@nhs.net](mailto:ncccg.contact-gfmc@nhs.net)

## GFMC — The Future!

The practice manager, Nikki Wood, and all doctors and staff at GFMC would like to reassure GFMC patients that there are no plans to close. GFMC doctors and staff are committed to ensure continuity of care for all its patients.



There is currently a due process of bidding for the NHS contract with the CCG/NHS England and we are hopeful that we will win the bid and therefore the same management team will remain to ensure that patients continue to receive the best healthcare.

***"NO PLANS FOR CLOSURE"***

### Our Contact Details:

**Grange Farm Medical Centre,  
17A Tremayne Road , Bilborough,  
Nottingham NG8 4HQ**

**Tel: 0115 89 65002  
[www.gfmc.org.uk](http://www.gfmc.org.uk)  
[ncccg.contact-gfmc@nhs.net](mailto:ncccg.contact-gfmc@nhs.net)**

**Grange Farm Medical Centre is the sister practice to Derby Road Health Centre 336 Derby Road, Lenton, Nottingham. NG7 2DW Tel: 0115 8965 001 Fax: 0115 837 8610 [www.drhc.org.uk](http://www.drhc.org.uk)**